



City of Rochester  
New Hampshire

## Natural Resources Master Plan Chapter

# Figure 10. Conservation & Public Lands

### Legend

#### Conservation Land

##### Level of Protection

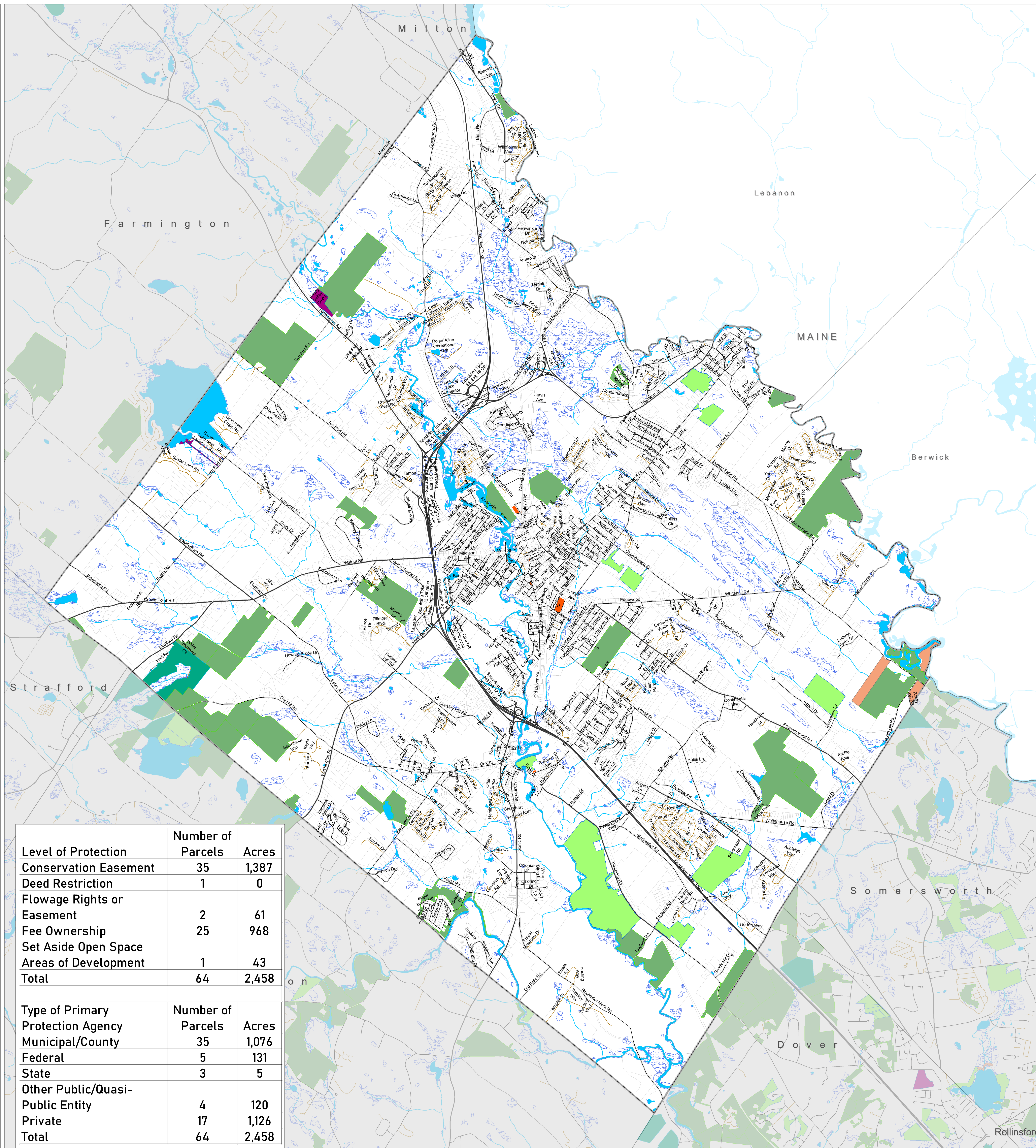
- Permanent Conservation Land
- Unofficial Conservation Land
- Unprotected Water Supply Land
- Developed Public Land
- Unknown
- Public Parks

##### Surface Water

- Lake, Pond, Reservoir
- River, Stream, Brook
- Wetlands

##### Roads

- State
- Local
- Private
- Not Maintained
- Recreation
- Tax Parcels
- City Boundary

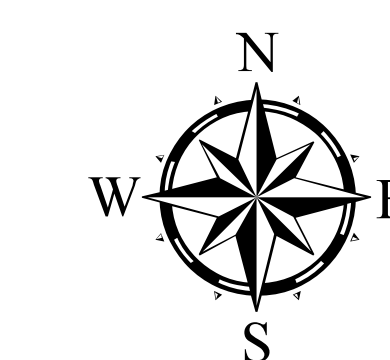
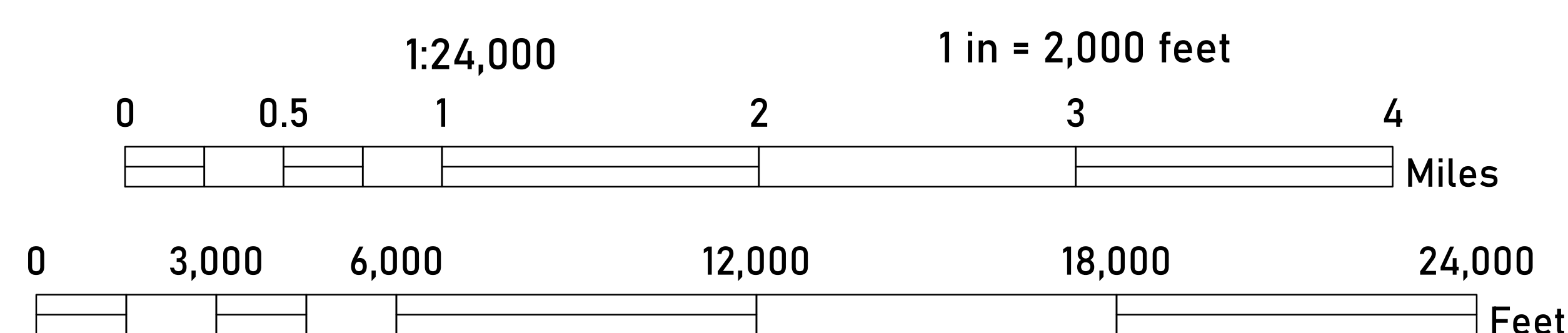


Level of Protection	Number of Parcels	Acres
Conservation Easement	35	1,387
Deed Restriction	1	0
Flowage Rights or Easement	2	61
Fee Ownership	25	968
Set Aside Open Space	1	43
Areas of Development	1	43
<b>Total</b>	<b>64</b>	<b>2,458</b>

Type of Primary Protection Agency	Number of Parcels	Acres
Municipal/County	35	1,076
Federal	5	131
State	3	5
Other Public/Quasi-Public Entity	4	120
Private	17	1,126
<b>Total</b>	<b>64</b>	<b>2,458</b>

### Scale



NH State Plane Coordinates  
North American Datum 1983 (Feet)

Data Sources  
NH Geodata Portal:  
NH Conservation and Public Lands  
NHD Water Body  
NHD Flowline  
NHD Area  
NH DOT Roads  
Political Boundaries

Rochester Master Plan  
Natural Resources Chapter  
Figure 10. Conservation &  
Public Lands

Prepared  
Date: January 11, 2023  
By: EF | Design & Planning, LLC

This map is intended for  
planning purposes only.