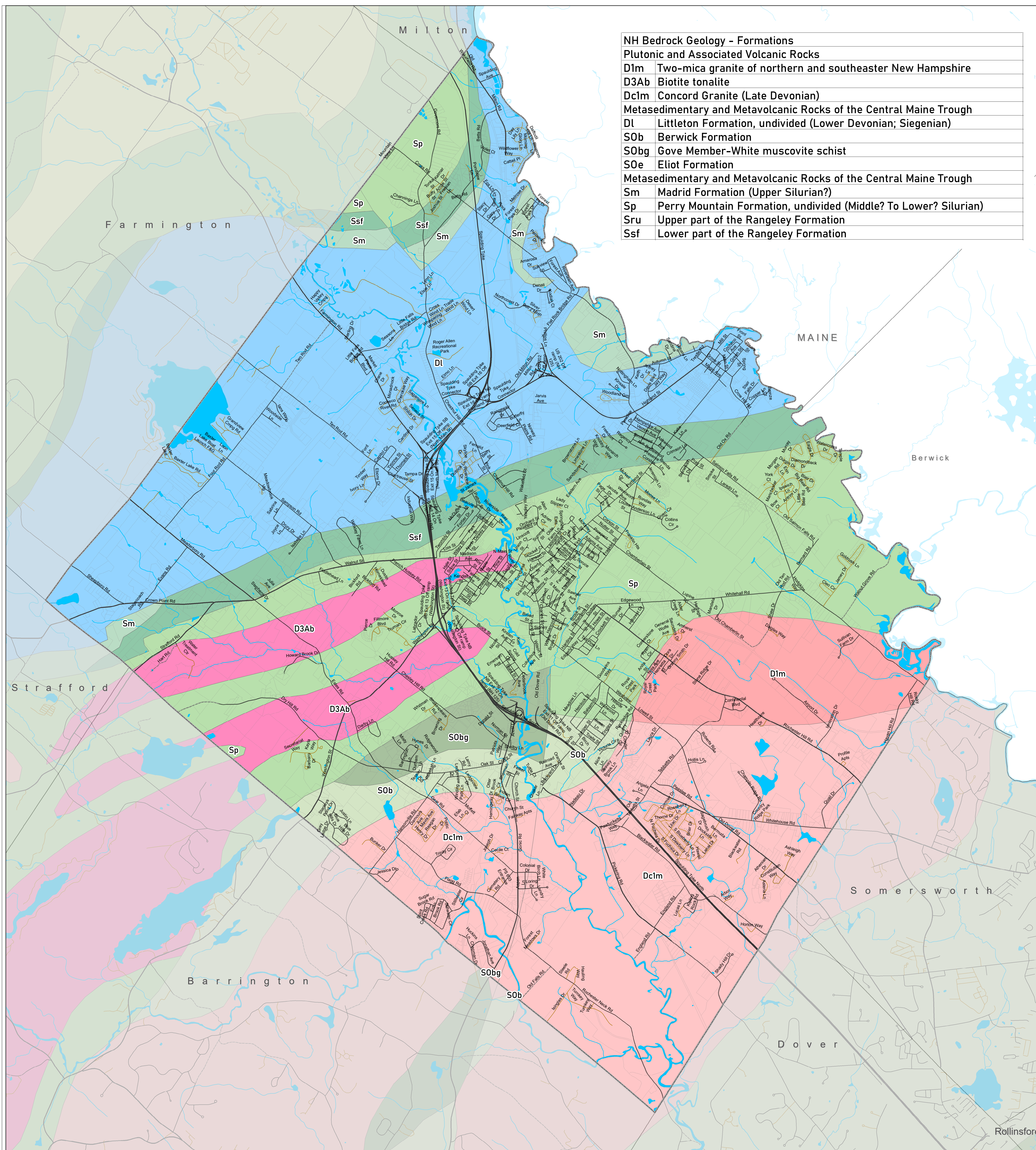




City of Rochester
New Hampshire

Natural Resources Master Plan Chapter

Figure 5. Bedrock Geology



NH Bedrock Geology - Formations	
Plutonic and Associated Volcanic Rocks	
D1m	Two-mica granite of northern and southeaster New Hampshire
D3Ab	Biotite tonalite
Dclm	Concord Granite (Late Devonian)
Metasedimentary and Metavolcanic Rocks of the Central Maine Trough	
DI	Littleton Formation, undivided (Lower Devonian; Siegenian)
S0b	Berwick Formation
S0bg	Gove Member-White muscovite schist
S0e	Eliot Formation
Metasedimentary and Metavolcanic Rocks of the Central Maine Trough	
Sm	Madrid Formation (Upper Silurian?)
Sp	Perry Mountain Formation, undivided (Middle? To Lower? Silurian)
Sru	Upper part of the Rangeley Formation
Ssf	Lower part of the Rangeley Formation

Legend

NH Bedrock Geology - Formations

- D1m
- D3Ab
- Dclm
- DI
- S0b
- S0bg
- S0e
- Sm
- Sp
- Sr
- Ssf

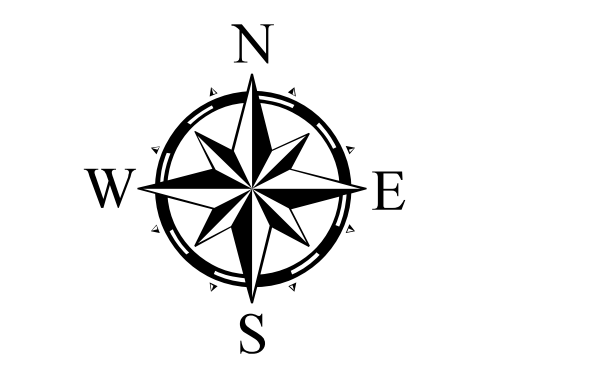
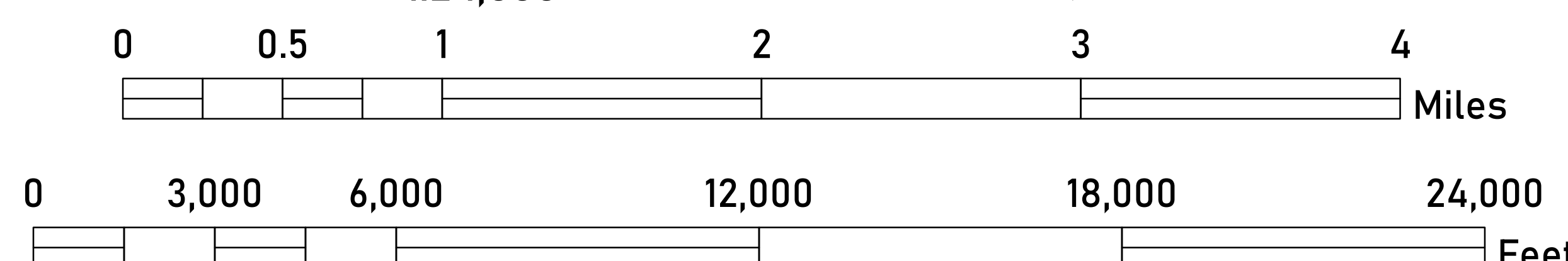
Surface Water

- Lake, Pond, Reservoir
- ~ River, Stream, Brook

Roads

- State
- Local
- Private
- Not Maintained
- Recreation
- Tax Parcels
- City Boundary

Scale
1:24,000 1 in = 2,000 feet



NH State Plane Coordinates
North American Datum 1983 (Feet)

Rochester Master Plan
Natural Resources Chapter
Figure 5. Bedrock Geology

Prepared
Date: January 9, 2023
By: EF | Design & Planning, LLC
efdesignplanning.com

This map is intended for
planning purposes only.

Data Sources

- City of Rochester:
- Tax Parcels, Vision
- NH Geodata Portal:
- NH Bedrock Geology Formations
- NHD Water Body
- NHD Flowline
- NHD Area
- NH DOT Roads
- Political Boundaries
- USGS National Geologic Map Database