

Natural Resources Master Plan Chapter Open House

Date: July 17, 2023

Time: 5pm-6:30pm

Location: Hanson Pines

Target Audience: Residents, Conservation Commission members

Purpose: Provide residents and other stakeholders with the opportunity to learn about the master plan chapter and contribute input and ideas that will help shape the chapter's content and recommendations.

Attendees: 8, excluding staff and consultants and guests

Discussion Input:

Topic 1: What natural resources or characteristics are important to you?

- Navigable rivers
- Stormwater
- Peat bog recognition
- Green space downtown
- Smart access
- Wildlife habitat
- Rare and endangered species
- Invasive species (removal of)
- Open space and farmland
- Open grassland habitat
- Lot size on agricultural land

What are your concerns?

- Over development of wet or poorly drained land
- Fragmented open space
- Stormwater volume waivers
- Air quality
- Urban trees (removal of trees, particularly on City-owned land)
- Loss of trees
- Loss of trees for solar

Topic 2: What else could the City do to protect, enhance, and promote natural resources and access to natural resources? What can residents do?

- Appropriate access
- Increase wetland buffer to 100 ft from all wetlands and water bodies
- Residents can manage their own stormwater
- Educate residents
- Fertilizer restrictions
- Lawn sprinklers
- City should plant/replace trees
- Promote natural resources
- Signage (at trails, conservation lands)
- Who is responsible for promotion (of natural resources? Planning, recreation, etc.)

Topic 3: Visioning: In 10 years, what do you want to stay the same? What do you want to be different?

- 20% conserved
- Isinglass and Salmon Falls to be navigable, discussion also included need to balance recreation and navigation with aquatic habitat needs
- Balance development with natural resources. Break down silos in the City.
- Slow down development
- Infill development
- Baxter Lake focus, recognize this asset.
- Extensive Riverwalk, plans implemented
- Accentuate rivers
- Remove non-essential dams (ex Gonic Dam)
- Turnkey landfill decommissioned. How used? Solar? Trees?

Other discussions and questions:

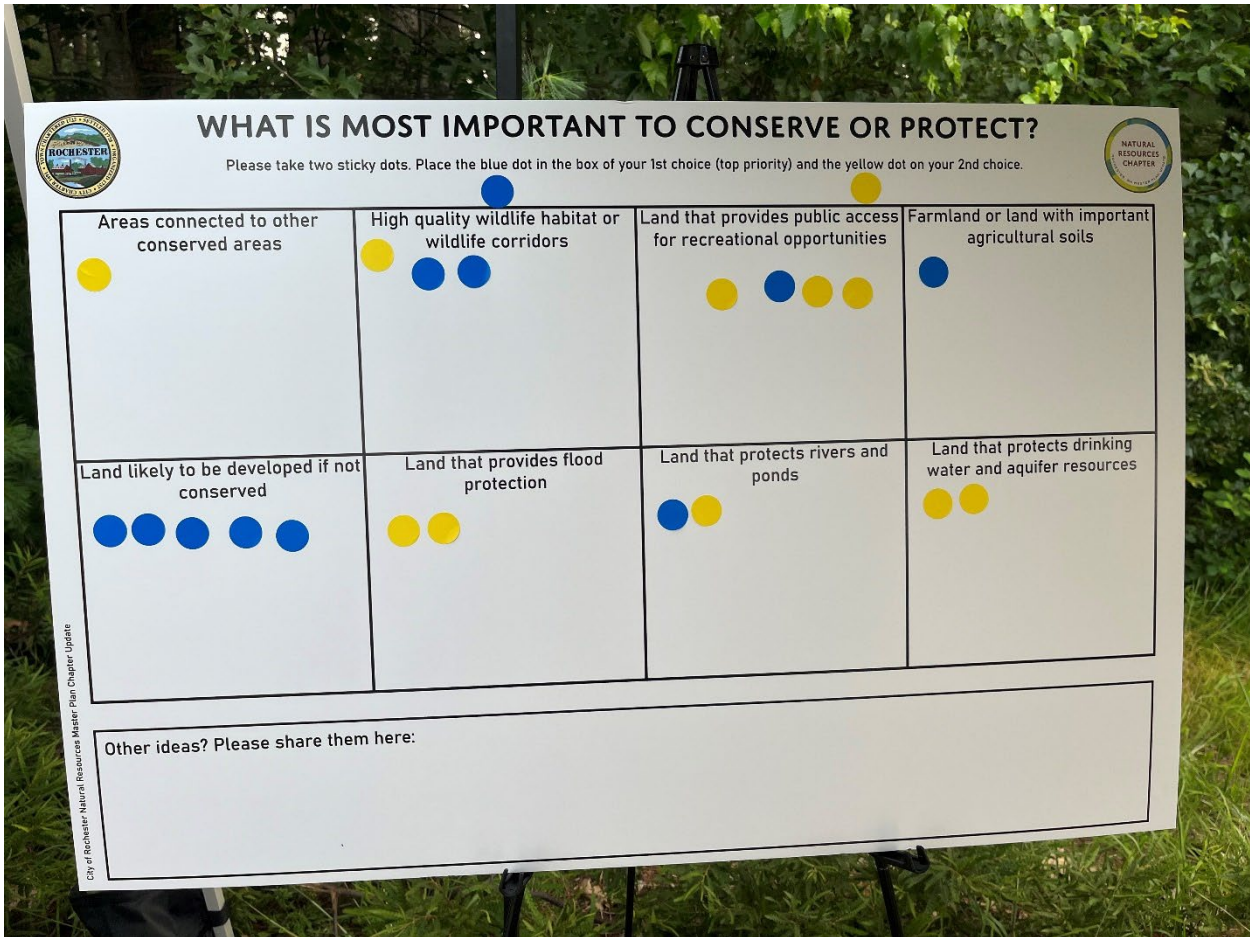
- Will wind energy be part of the chapter?
- What to do about waivers issued for stormwater management.

Poster Input:

Poster 1: What is most important to conserve or protect?

	1 st choice (top priority)	2 nd choice	Weighted Score ¹
Areas connected to other conserved areas	0	1	1
Land likely to be developed if not conserved	5	0	10
High quality wildlife habitat or wildlife corridors	2	1	5
Land that provides flood protection	0	2	2
Land that provides public access for recreational opportunities	1	3	5
Land that protects rivers and ponds	1	1	3
Farmland or land with important agricultural soils	1	0	2
Land that protects drinking water and aquifer resources	0	2	2

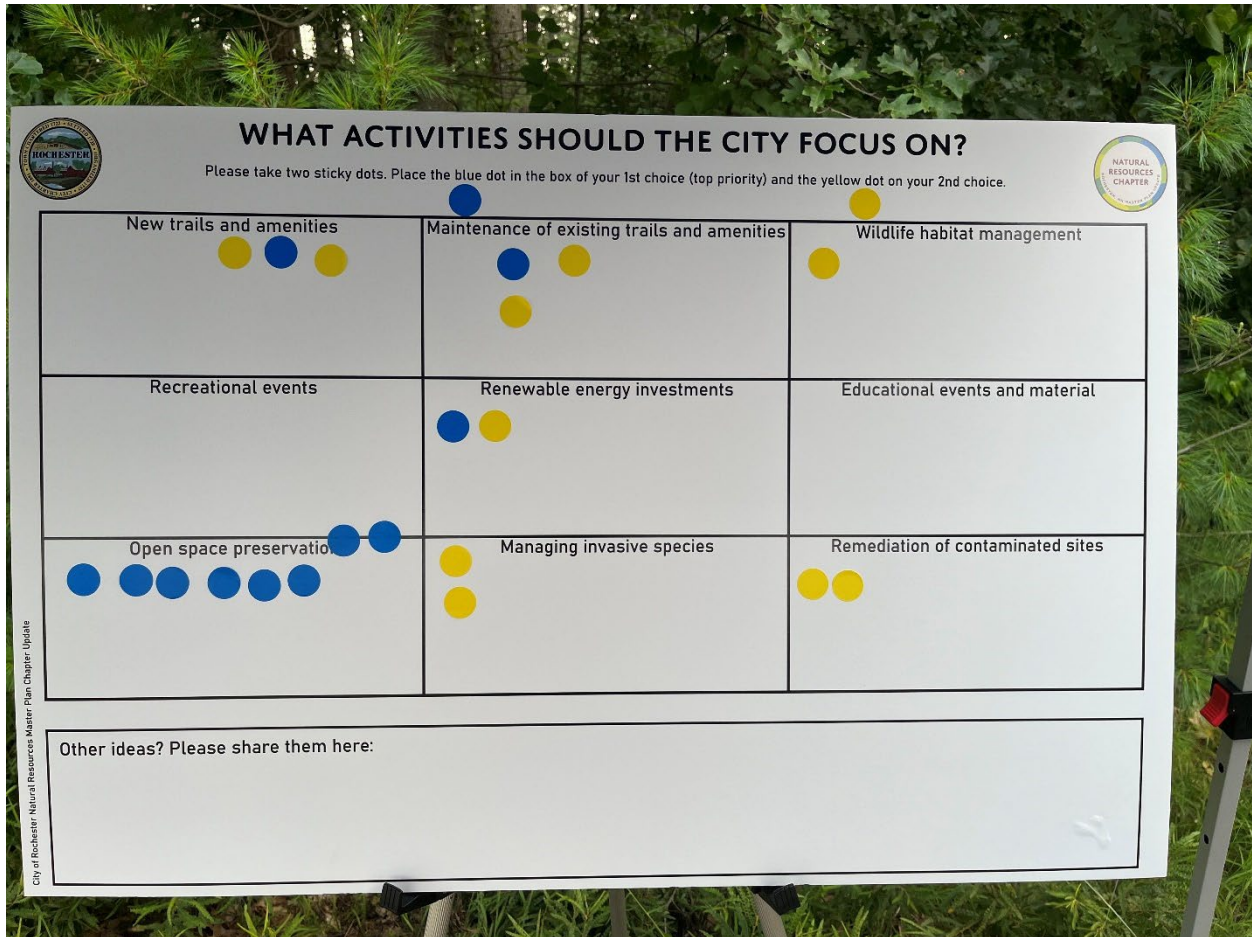
¹ 2 points for first choice, 1 point for 2nd choice



Poster 2: What activities should the City focus on?

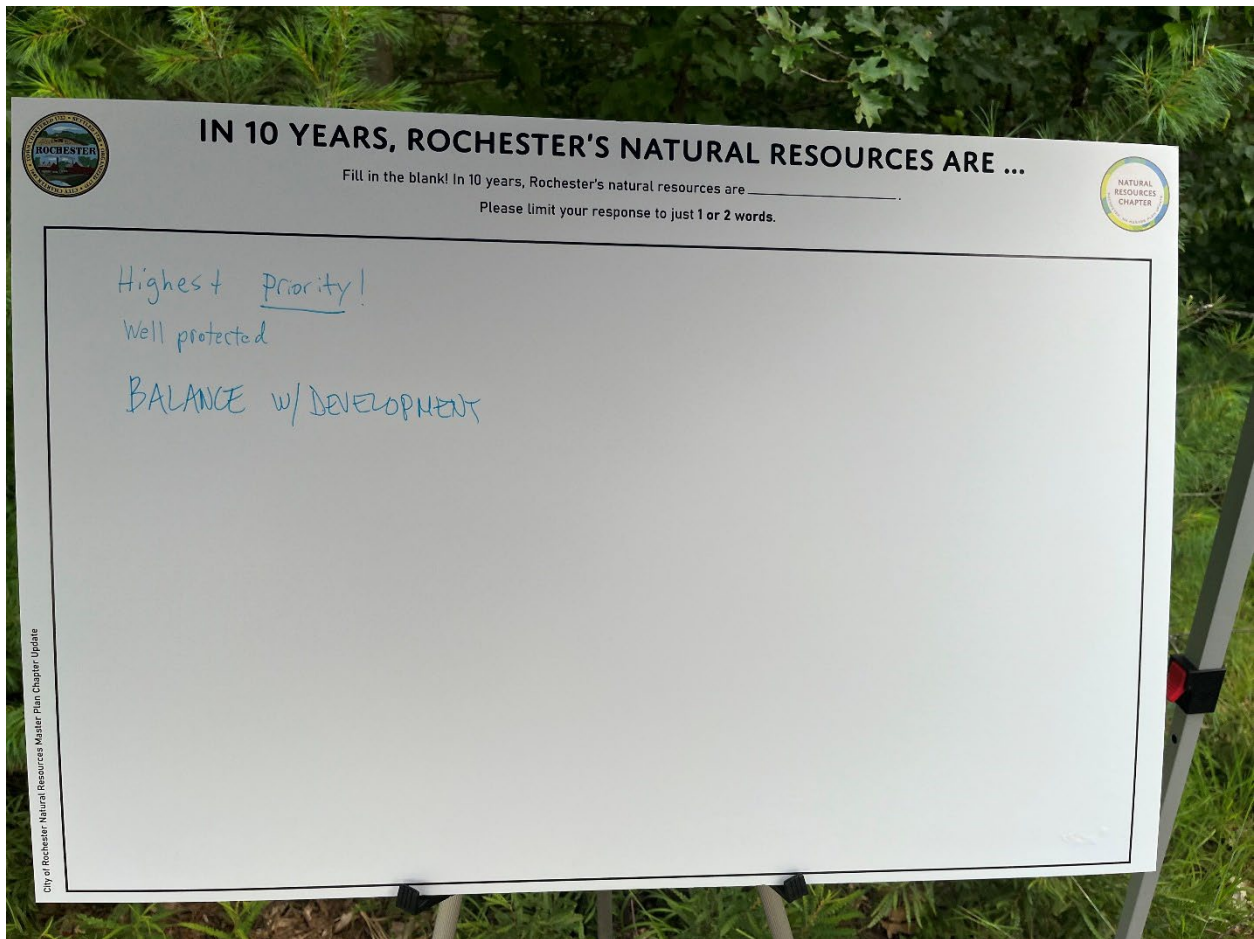
	1 st choice (top priority)	2 nd choice	Weighted Score ¹
New trails and amenities	1	2	4
Recreational events	1	0	2
Open space preservation	7	0	14
Maintenance of existing trails and amenities	1	2	4
Renewable energy investments	1	1	3
Managing invasive species	0	2	2
Wildlife habitat management	1	0	2
Educational events and material	0	0	0
Remediation of contaminated sites	0	2	2

¹ 2 points for first choice, 1 point for 2nd choice



Poster 3: In 10 years, Rochester’s natural resources are _____ . Please limit your response to just 1 or 2 words.

- Highest priority
- Well protected
- Balanced with development



City of Rochester Natural Resources Master Plan Chapter Update

Poster 4: What would you like to see along Rochester’s rivers? Place the colored stars along the Cocheco River, Isinglass River, and Salmon Falls River where you think these uses are appropriate.

Green star = preservation of undeveloped natural areas

- Cocheco River
 - North of Little Falls Bridge Road (x2)
- Salmon Falls River
 - South of Flat Rock Bridge Road (x2)
 - Southeast of Portland Road and west of Crow Hill Rd (x2)
 - Crow Hill Rd (x2)
 - North of Eagle Drive
 - North of Salmon Falls Road near Sullivan Drive
 - North of Salmon Falls Road south of Walnut Grove Road (x2)
- Isinglass River
 - South of Flagg Road and west of Rt 125
 - Southwest of Rochester Neck Rd at city line
 - East of Rochester Neck Road near convergence with Cocheco

Pink star = public access and recreational amenities

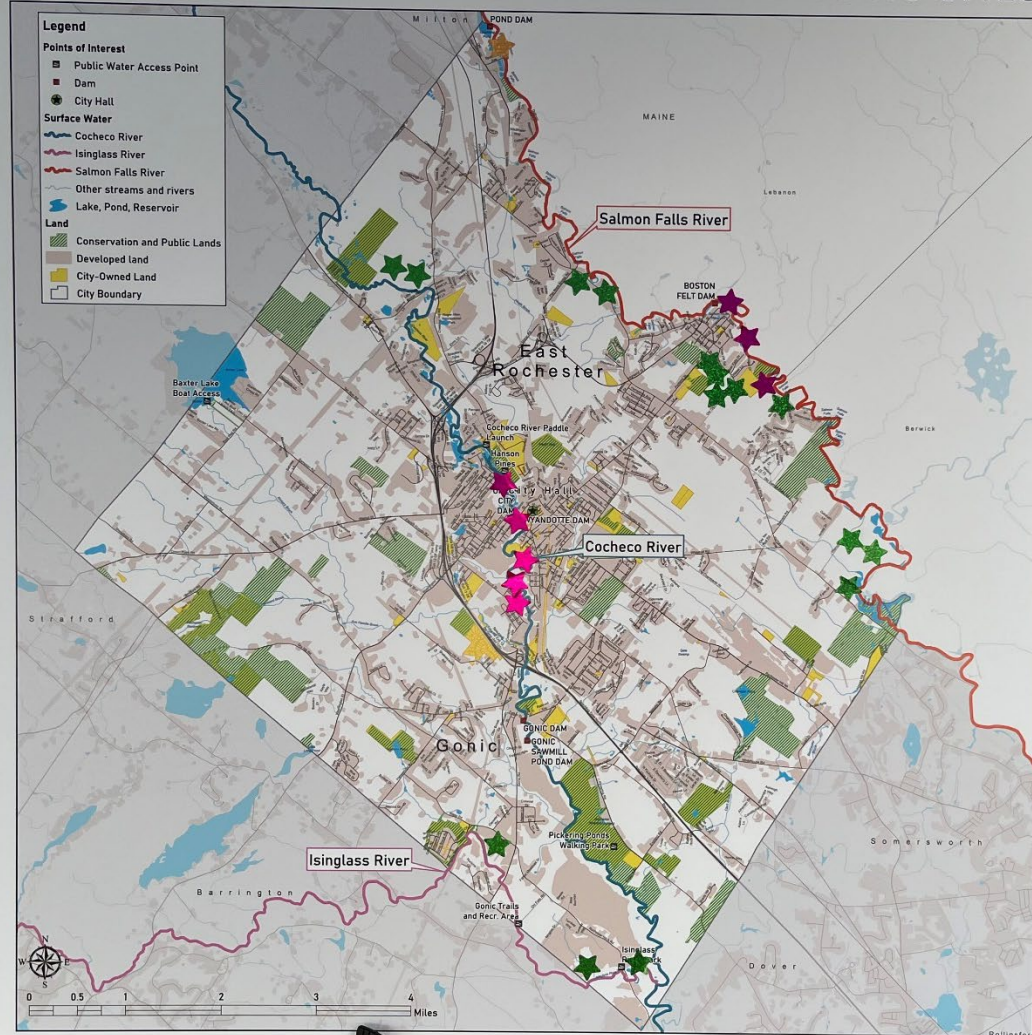
- Cocheco River
 - South end of Hanson Pines
 - Wyandotte Dam
 - Between William Allan School and fairgrounds
 - West of Wilson Street (x2)
- Salmon Falls
 - Mill Street
 - Near Cold Springs Cemetery and Green Street
 - Near the City Forest off Cooper Lane

Yellow star = development (with appropriate regulations)

- Salmon Falls River
 - North of Spaulding Ave



WHAT WOULD YOU LIKE TO SEE ALONG ROCHESTER'S RIVERS?



Place the colored stars along the Cocheco River, Isinglass River, and Salmon Falls River where you think these uses are appropriate:

- = preservation of undeveloped natural areas
- = public access and recreational amenities
- = development (with appropriate regulations)